



## KEY FEATURES

- Effective on Myopia up to -5.00 Diopters
- Treats significant amounts of corneal astigmatism
- Reverse curve shaping and recovery zones work together to provide desired corneal molding.
- Alignment Curve Stabilization provides a stable and comfortable alignment fit across the mid-peripheral cornea while providing adequate tear exchange.



Vision Shaping  
Treatment VST®

[metro-optics.com](http://metro-optics.com)



15802 Vision Drive  
Pflugerville, Texas 78660  
(800) 223-1858

[info@metro-optics.com](mailto:info@metro-optics.com)

[metro-optics.com](http://metro-optics.com)



**Myopia Management  
Made Easy!**

**FITTING GUIDE**



## MANAGE MYOPIA THE EASY WAY!

The Ortho-ATX is a custom designed overnight orthokeratology lens that utilizes an empiric fitting approach to treat high amounts of myopia and astigmatism, producing highly successful outcomes quickly and easily.



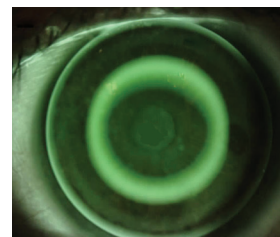
## ORDER LENS EMPIRICALLY

No need to invest in expensive fitting sets or training courses! Order your patients initial lens empirically by sending Metro Optics the following information:

- Reliable corneal topography
- Reliable manifest refraction

## DISPENSE VISIT

- Place Ortho-ATX on patient's eye
- Instill a small amount of fluorescein
- Observe lens for centration and fit

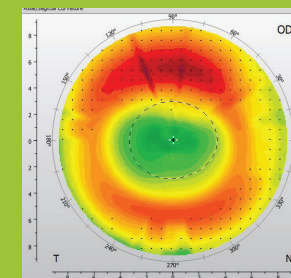


*Ideal fitting Ortho-ATX lens*

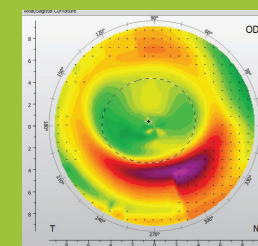
- Once the lens is determined a good fit, instruct the patient to wear the lens overnight and return for follow-up immediately in the morning.

## NEXT DAY FOLLOW-UP

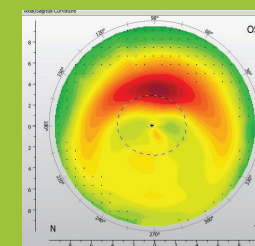
- Re-evaluate lens fit with fluorescein to look for any decentration.
- If fluorescein pattern is ideal, then remove the lens and perform corneal topography to verify corneal flattening is happening in the desired place of the eye.
- If decentration is noted, call Metro Optics consultation.



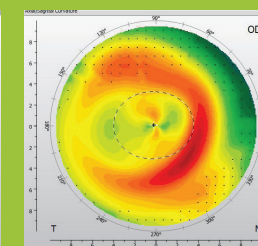
*Ideal central flattening*



*Superior decentration*



*Inferior decentration*



*Temporal decentration*

## RECOMMENDED FOLLOW-UP SCHEDULE

Proper follow-up is key in the management of your myopia patient. To ensure the best outcome with the Ortho-ATX lens, we suggest seeing the patient at the following intervals:

- One week after initial dispense
- One month after the 1-week follow-up
- Three months after the 1-month follow-up
- Every 6 months thereafter if the lens is fitting well

[metro-optics.com](http://metro-optics.com)